

SOFT31 (1½"-2")

Single Orifice Float Trap with SLR / TV

Description

The Forbes Marshall Single Orifice Float Trap, SOFT31, is a single orifice condensate drain trap of cast iron body and stainless steel internals.

Sizes and Pipe Connections

1½ and 2" BSPT/NPT

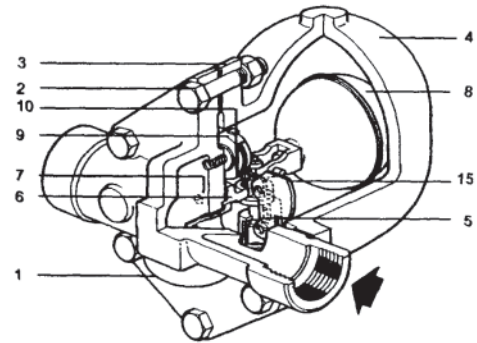
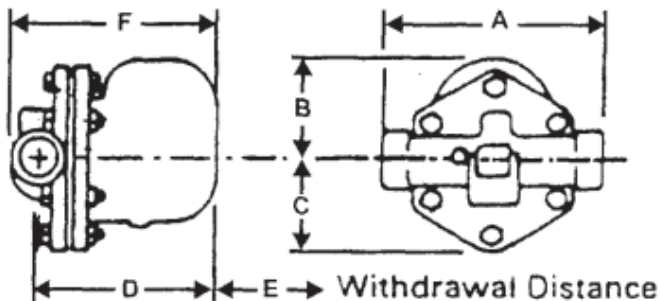
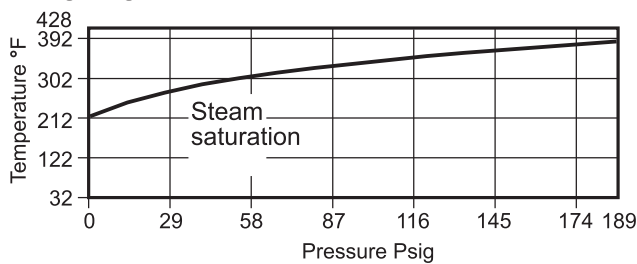
Available Types

SOFT31 with Thermostatic air Vent (TV)
SOFT31 with Steam Lock Release (SLR)

Limiting Conditions

PMO - Maximum Operating Pressure		189 Psig
TMO - Maximum Operating Temperature		428° F
Cold Hydraulic test pressure		26 bar g
Maximum	SOFT31	65 Psig
ΔPMX Differential	SOFT31	145 Psig
Pressure	SOFT31	189 Psig

Operating range



Material

Sr. No.	Part	Material	Standard
1.	Body	Cast Iron	IS 210 FG 260 (ASTM A 48, cl. 35)
2a.	Cover bolts	Carbon Steel	H.T.IS1367 Gr.8 (ASTM A 193, B7)
2b.	Cover nuts	Carbon Steel	H.T.IS1367 Gr.8 (ASTM A194, 2H)
3.	Cover gasket	Reinforced exfoliated graphite	(ASTM F 104)
4.	Cover	Cast Iron	IS 210 FG 260 (ASTM A 48, cl. 35)
5.	Main valve assly. with erosion deflector	Stainless Steel	BS 3148 Part 2 ANC - 2 (UNS S 43100)
6.	Main valve assly. gasket	Reinforced exfoliated graphite	(ASTM F 104)
7.	Main valve assly. studs & nuts	Stainless Steel	ASTM A276, Type 431
8.	Ball float	Stainless Steel	ASTM A240, Type 304
9.	Air vent assly.	Stainless Steel	ASTM A240, Type 316
10.	Air vent seat gasket	Stainless Steel	ASTM A240, Type 410
*11.	SLR unit	Stainless Steel	ASTM A276, Type 316
*12.	SLR unit gasket	Graphite	
*13.	SLR seat	Stainless Steel	ASTM A743, Type CA40
*14.	SLR seat gasket	Stainless Steel	ASTM A240, Type 410
15.	Deflector plate	Stainless Steel	ASTM A240, Type 304

* Not shown in the drawing

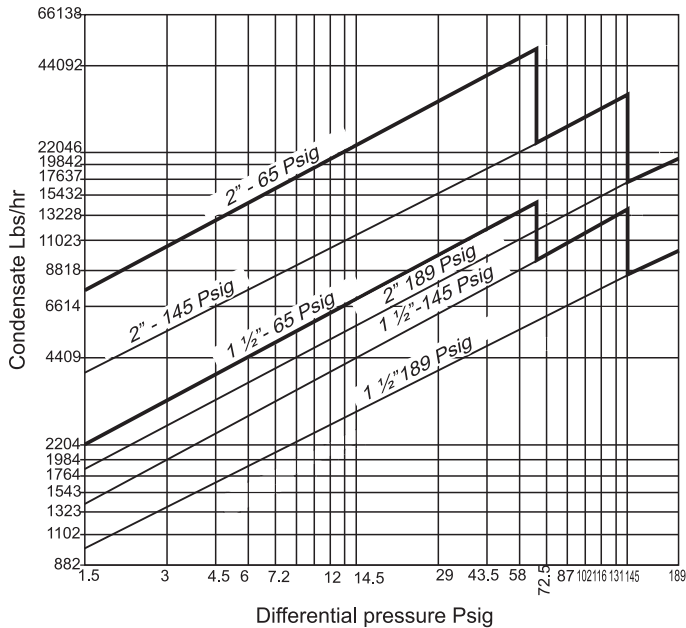
Note: Material specification mentioned in bracket are for reference only.

Dimensions (approx. in Inches):

Size	A	B	C	D	E	F	Wt. (Lbs)
1½	10.6	5.0	4.3	9.6	7.9	10.8	38.5
2	11.8	5.5	4.9	9.8	8.1	11.3	48.5

General Tol : ±1/8"

Capacity Chart



How to Order

Example: 1 1/2" Single Orifice Float Trap, SOFT31, 189 Psig, TV, NPT

Installation

The arrow on the name plate must point downwards. The arrow on the casting indicates the flow direction. Refer detailed installation and maintenance manual for more information.

Optional Extras

Drain tapping : the cover can be drilled and tapped to 1/2" NPT to enable a drain to be fitted.

Servicing

With suitable isolation, repairs can be carried out with trap on the line. Undo cover bolts and lift off the cover. When re-assembling, make sure that all joint faces are clean. Always use a new gasket and apply a thin coating of join paste. Tighten cover bolts uniformly.

Recommended Tightening Torques

Part	Torque (Ft-Lbsf)
1. TV seat	33 - 41
2. SLR Seat	33 - 41
3. SLR Body	44 - 52
4. Valve Housing (Studs)	11 - 15
5. Cover Bolts	48 - 55

Spare Parts

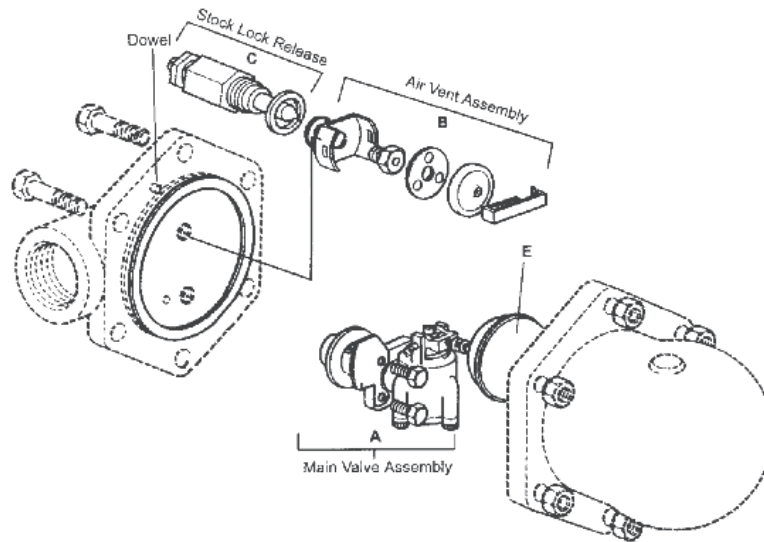
The spare parts available are shown in the figure in a heavy outline. Parts drawn in a broken line are not supplied as spares.

Available Spares

Main valve assembly with erosion deflector	A
Air vent assembly	B
Steam lock release unit	C
Sets of gasket (pack of 5 sets)	D
Float	E

How to Order Spares

Always order spares using the description given in the column above, headed "Available Spares", and stating the size and type and differential pressure of the trap. For codes refer the user manual.



Forbes Marshall
Krohne Marshall
Forbes Marshall Arca
Codel International
Forbes Solar
Forbes Vyncke
Forbes Marshall Steam Systems

Forbes Marshall USA (FM USA Inc.)
480 South California Avenue, Unit 102
Palo Alto, CA 94306
P: 650-327-4227
F: 650-327-4127

Email : fm.northamerica@forbesmarshall.com

All contents herein are the property of Forbes Marshall Private Limited ("FMPL") or Forbes Marshall Steam Systems Private Limited ("FMSSPL"), as the case may be, and having protection under the intellectual property rights. Any reproduction, distribution or disclosure without prior written permission is prohibited. Information in this document is subject to change without notice.

Forbes Marshall Canada Inc.
2425 Matheson Blvd East, 8th Floor
Mississauga, ON L4W 5K4
P: 905-361-2880
F: 905-361-6401

Forbes Marshall Pvt. Ltd.
B-85, Phase II, Chakan Indl.
Area, Sawardari,
Chakan, Tal. Khed.
Dist. Pune - 410 501, India
Tel. 91(0)2135-393400
www.forbesmarshall.com